

REGISTRATION FORM

NAME:-----

ADDRESS:-----

TELEPHONE
HOME:-----

WORK:-----

EMAIL:-----

DISCIPLINE:-----

CHEQUE__ VISA__ Mastercard__
#-----exp___/___

REGISTRATION DEADLINE:
Early Bird February 15,2010
Deadline March 1, 2010

**Please make cheques payable
to: Fraser Valley Child
Development Centre**

**Return your registration
form and cheque to:**

Workshop
**Fraser Valley Child
Development Centre**
102-32885 Ventura Ave.
Abbotsford BC
V2S 6A3

or

Fax: 604-852-5794

Who Should Attend:

A broad audience of
clinicians, psychologists,
therapists, social workers,
psychiatrists and special
educators.

Location:

Fraser Valley Child
Development Centre
102-32885 Ventura Ave.
Abbotsford BC

Date:

March 15-17, 2010

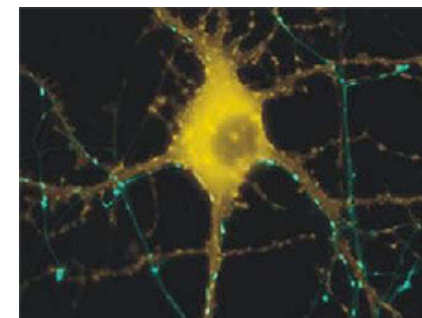
Cost: \$450

Questions?

Contact Kirstie Glasgow
nextstep@fvcdc.org



Mental health, Sensory Processing and Challenging Behaviour



Instructor:
Kim Barthel
BMR,OTR

Fraser Valley Child
Development Centre

March 15-17, 2009

Mental health, Sensory Processing and Challenging Behaviour

Increasing numbers of children and adolescents are presenting with complex combinations of both a developmental delay and accompanying behaviour or mental health challenges.

Sorting through these overlapping complexities with diverse behavioural outcomes is often a dilemma for the many professionals serving this population.

What drives behaviour?

Is it a sensory processing challenge?

Is it neurobiology?

Is it emotional/behavioural?

Is it cognitive impairment?

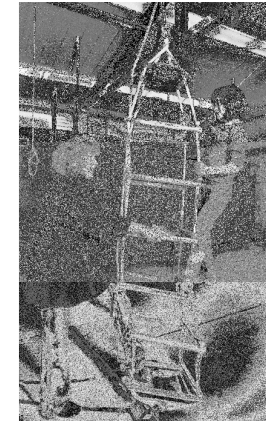
Join this three day workshop developing your "detective skills" evaluating these merging influences. Discover the addition of sensory processing intervention to your mental health toolbox.

This dynamic workshop provides a current scientific review of neurobiology of sensory processing disorders, deepening the participants understanding of brain-behavioral relationships in the pediatric population.

Course Objectives

- Introduction to neurobiology of challenging behaviour
- Sensory, emotional, and cognitive components of behaviour
- Analyzing various overlapping contributions to behaviour problems
- Neurobiology of trauma and attachment as they relates to sensory processing and behavior challenges
- Relate the symptoms and behavioral characteristics of autism spectrum disorder, fetal alcohol spectrum disorder, fetal narcotic effect and attention deficit disorder/hyperactivity to specific neurological etiology.
- Comprehend what happens in the brain during bonding, connection, and interaction in typical development, with comparison to the neurobiology of atypical patterns in a variety of neurobiological disorders.
- Understand how the nervous system self-regulates, specifically comprehending the relevance of emotion and sensation as they contribute to states of arousal.
- Develop a repertoire of techniques and sensory strategies to achieve connection and adaptive responses in a variety of environments.
- Strengthen clinical reasoning skills with the ASD/FASD and ADD/ADHD population.
- Comprehend the neurological processes of attention, learning and memory.
- Develop a repertoire of sensory strategies to enhance attention and learning

Kim Barthel, BMR,OTR



is an author, consultant, occupational therapist, and owner of Labyrinth Journeys, a workshop company dedicated to providing professional and personal growth workshops. Kim is a Neuro-Developmental Treatment-OT Instructor and a teacher of Sensory Integration Therapy, with post-graduate study in neuro-sciences and a range of complementary healing practices. Having recently authored the pediatric textbook; Evidence and Art: Merging Forces in Pediatric Therapy, Kim proficiently blends and bridges the most up to date science of connection and attachment theory with the intuitive aspect of the therapeutic process. Kim's recent professional challenges include team strategy facilitation for acute pediatric/adolescent mental health cases, and creating sustainable care strategies in a wide variety of cultures throughout the world. Kim currently lives in Victoria, BC with her husband and thirteen year old daughter.

7442 Mark Lane
Victoria, BC
V9E 2A1
(250)544-0950
Kimberly@labyrinthjourneys.com